



CITYSCAPES PLAZA

FARGO, ND

Propelling downtown Fargo forward, this five-story mixed-use building offers stores, restaurants and bars on the main level, apartment living on the upper floors and heated underground parking.

The underground parking garage utilized cast in place concrete spread footings and foundation walls with precast concrete beams columns and hollowcore floors. Due to the building's close proximity to busy downtown streets a deep steel sheet pile retaining walls system was employed to facilitate the underground construction and keep city streets open for traffic. The second floor is constructed with steel beam and columns and hollowcore precast planks. Lateral stability is accomplished utilizing steel braced frames. Upper floors utilize conventional wood framing systems including stud walls, engineered wood floor and roof trusses and plywood floors and shear walls.

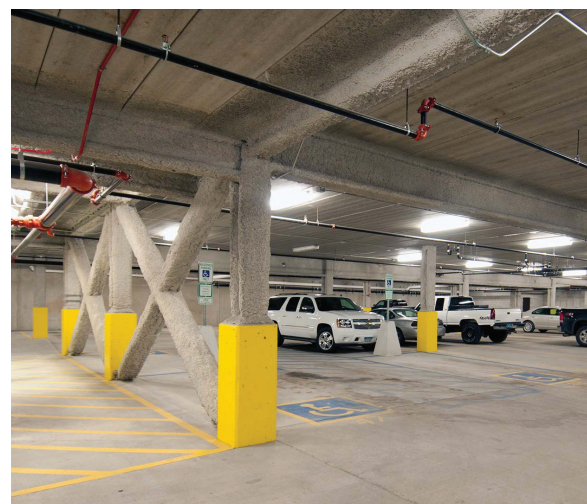
Project Size: 195,440 SF

Completion Date: 2009

Project Cost: \$13.8 Million

Similar Projects:

- Civic Place Apartments
- Capital Square
- Eventide
- Arbor Court Apartments
- Student Housing - Williston State College
- Capital Square Building #4
- 4th Street Development
- The Bluffs of Elk River
- Woodhaven Plaza



FARGO • SIOUX FALLS



MINNEAPOLIS • CORONA

EST. 1983

HEYERENGINEERING.COM

(701) 280-0949